

Grab dredger

# M/A SKJÆRHAVN



**Area of application:**  
 The vessel is most suited for dredging in loose mud masses composed of stone and gravel. The machine lifts the mud mass from the seabed with a grab. The mud mass is loaded onto barges which transport the mass to the dumping location.

**CONSTRUCTOR:** Kragerø Slip i 1974. Rebuilt by Mjøllem & Karlsen, Bergen, in 1991.

**CALL SIGNAL:** LM 8729

**MAIN DATA:**

Overall Length:	21 m
Width:	12,15 m
Depth:	2,3 m
Draught:	1,3 m
Light Ship Weight:	213 tonnes

**PRODUCTION CAPACITY:**

Dredging capacity:	25-100 m <sup>3</sup> /h
- depending on the quality of the mud mass	
Max. dredging depth:	25 m

**INTERIOR:**

4 cabins, galley, living room and utility room

**GRAB MACHINE MOUNTED ON DECK (CAB):**

Model:	Weserhütte, SW 311 B
Own Weight:	42,9 tonnes
Operating Engine:	Caterpillar 3406 BDI-T
Control System:	Wire-operated
Length of Boom:	18,5 m
Grab Capacity:	1,6 m <sup>3</sup>
Grab Weight:	9 tonnes

**OTHER MACHINERY:**

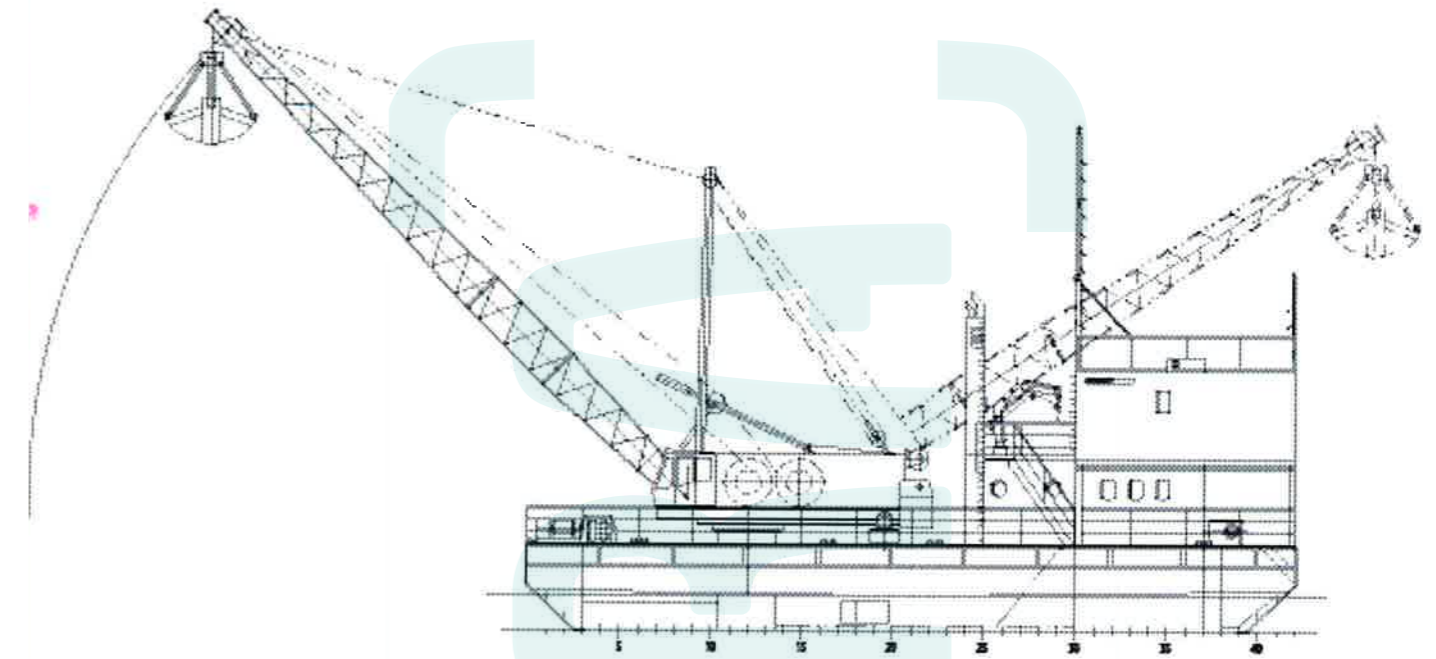
Auxiliary power unit for the main production of electric power :  
 2 x Cummins (122 kW & 59 kW)

**SMALL MACHINERY ON DECK:**

2 x hauling winches	(5.5 tonnes)
1 x anchor winch	(5.6 tonnes)
2 x capstan winches	(3.4 tonnes)

**DECK CRANE:**

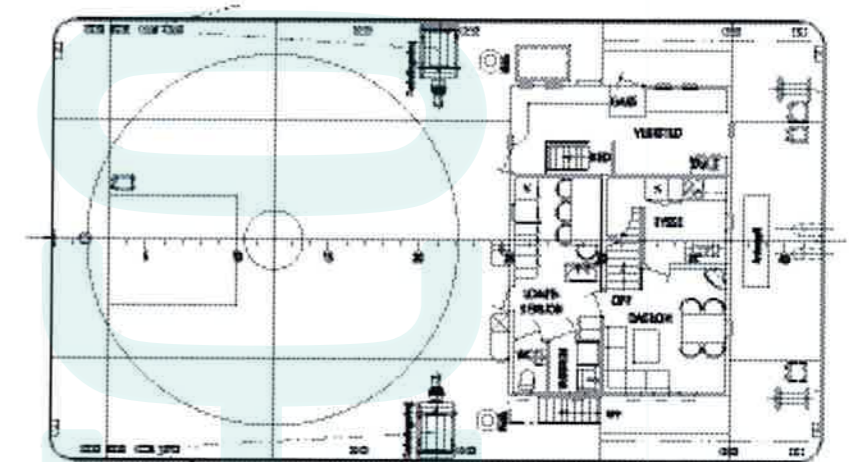
Tico 108 WT 1500



PROFIL



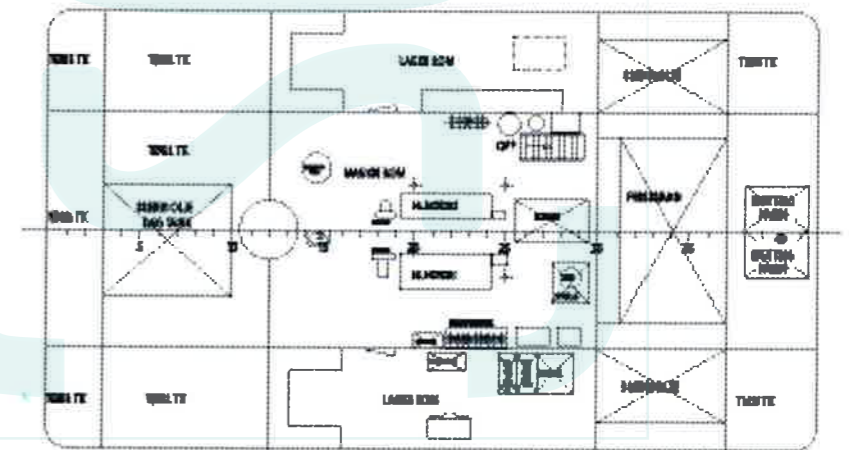
01-DEK



HOVED DEK

**HOVED DIMENSJONER:**

LÆNGDE O.A.	21.00	M
BREDDEN PÅ SPT.	12.00	M
STØRSTE BREDDEN	12.15	M
DYBDE / RISS	2.30	M
DYPGANG MAX.	1.30	M



UNDER HOVED DEK